



HAMPO-N6MF-IMX274 V1.0

8.3MP Sony IMX274 MIPI Interface M12 Fixed Focus Camera Module



Front View



Back View

Specifications

Camera Module No.	HAMPO-N6MF-IMX274 V1.0
Resolution	8.3MP
Image Sensor	IMX274
Sensor Type	1/2.5"
Pixel Size	1.62 um x 1.62 um
EFL	3.60 mm
F.NO	2.00
Pixel	3840 x 2160
View Angle	130.0°(DFOV) 100.0°(HFOV) 59.0°(VFOV)
Lens Dimensions	13.65 x 13.65 x 22.52 mm
Module Size	40.00 x 22.00 mm
Module Type	Fixed Focus
Interface	MIPI
Auto Focus VCM Driver IC	None
Lens Model	HAMPO-LENS-MJ3621A
Lens Type	650nm IR Cut
Operating Temperature	-30°C to +75°C
Mating Connector	DF30FC-30DS-0.4V



HAMPO-N6MF-IMX274 V1.0

8.3MP Sony IMX274 MIPI Interface M12 Fixed Focus Camera Module



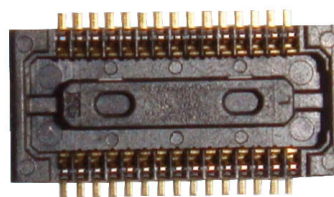
Top View



Side View



Bottom View



Mating Connector

A

B

C

D

E

RoHS

PIN SIGNAL

1 XCE

2 DGND

3 DVDD1.2V

4 DOVDD1.8V

5 XHS

6 XVS

7 AVDD2.8V

8 AGND

9 SDA

10 SCL

11 DGND

12 XCLR

13 DGND

14 INCK

15 DGND

16 DMO4P

17 DMO4N

18 DGND

19 DMO3P

20 DMO3N

21 DGND

22 DMO2P

23 DMO2N

24 DGND

25 DMCKP

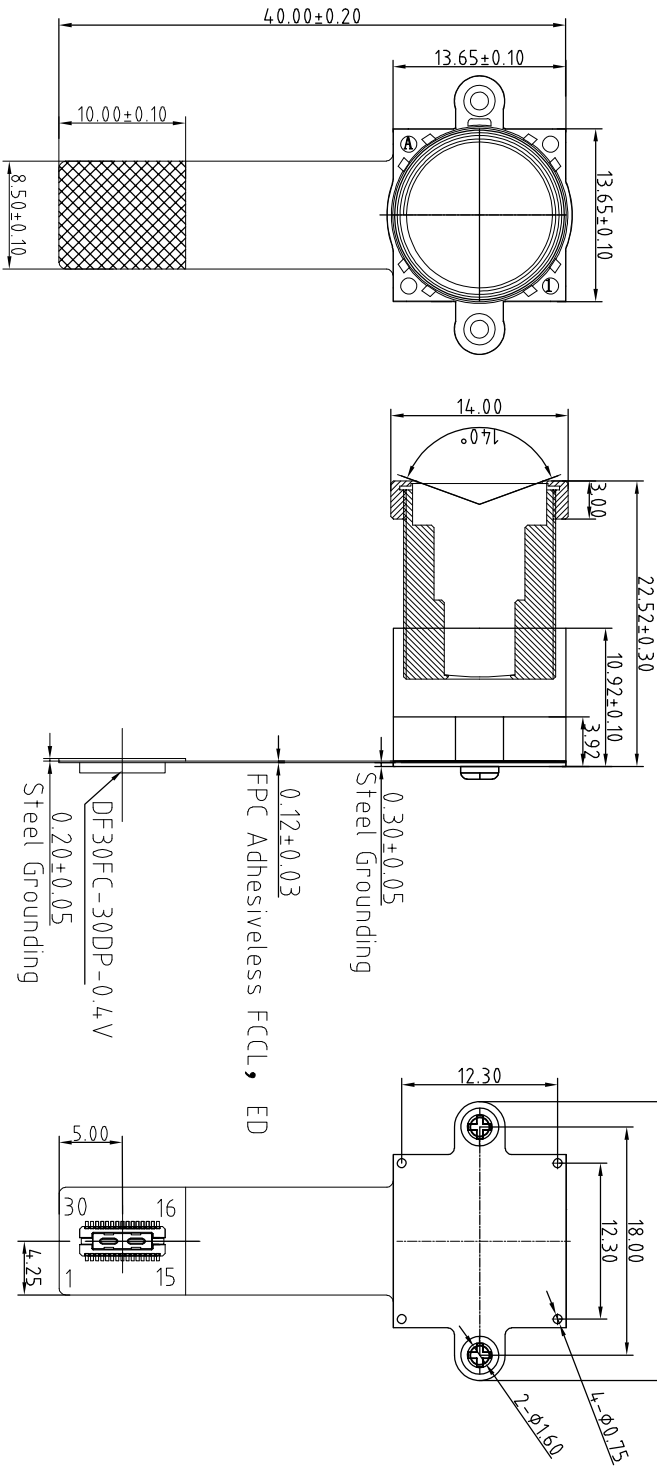
26 DMCKN

27 DGND

28 DMO1P

29 DMO1N

Version	Mark	Information	Date
V1.0	PD	First Version	04-09-2019



Parameters:

1、Sensor specification:

Image Sensor: IMX274LQAC-C

Pixel: 1.62umx1.62um

Lens Type: 1/2.5

Important Voltage Description: DVDD1.2V

(external power supply);

2、Lens specification:

FOV: 140°

F/NO.: 2.0

TV distortion: <25%

Focal length: 3.6mm

Composition: 4G +IRFILTER

IR Cut Coating: 650nm±10nm@50%

K

Designed By

Kevin

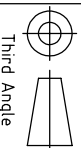
Model Name:

K

N6MF-IMX274 V1.0

Checked By

Aouly Yan



Unit: mm

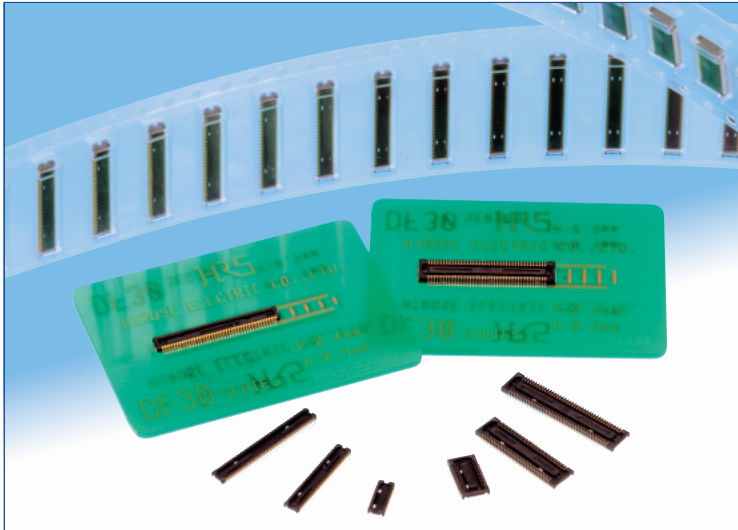
Scale: 1:1

Sheet: 1 of 1

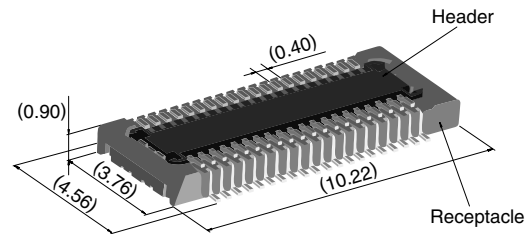
Version: 1/0

0.4 mm Pitch, 0.9 mm Height, Board-to-Board / Board-to-FPC Connectors

DF30 Series



Extremely small size



40 positions shown

Overview

Continuous miniaturization and increased component density on PCB created demand for extremely low profile connectors. This series is addition of a new extremely low profile connectors to Hirose's wide range of high reliability board-to-board/board-to-FPC connection solutions.

Features

1. Contact reliability

Concentration of the contact's normal forces at the single point assures good contact wipe and electrical reliability, while confirming the fully mated condition with a definite tactile click.

2. Self alignment

Recognizing the difficulties of mating extremely small connectors in limited spaces the connectors will self align in horizontal axis within 0.3 mm.

3. Automatic board placement

Packaged on tape-and-reel the plug and headers have sufficiently large flat areas to allow pick-up with vacuum nozzles of automatic placement equipment.

4. Variety of contact positions and styles

Available in standard contact positions of: 20, 22, 24, 30, 34, 40, 50, 60, 70 and 80 with and without metal fittings. Addition of metal fittings does not affect external dimensions of the connectors.

Smaller contact positions are also available.

5. Support for continuity test connector

Connectors which have increased insertion and removal durability are available for continuity tests. Contact your Hirose sales representative for details.

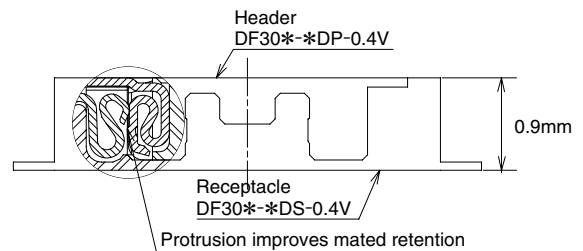
Applications

Cellular phones, PDA's, mobile computers, digital cameras, digital video cameras, and other devices demanding high reliability connections in extremely limited spaces.

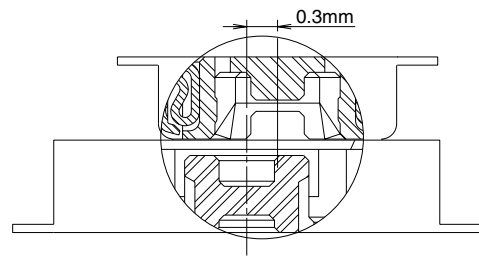
Low profile

Increased mated retention

High contact reliability



Self alignment



■Product Specifications

Rating	Rated current 0.3A Rated voltage 30V AC	Operating temperature range : -35℃ to 85℃ (Note 1) Operating humidity range : Relative humidity 20% to 80%	Storage temperature range -10℃ to 60℃ (Note 2) Storage humidity range Relative humidity 40% to 70% (Note 2)
--------	--	---	--

Item	Specification	Conditions
1. Insulation resistance	50 MΩ min.	100V DC
2. Withstanding voltage	No flashover or insulation breakdown.	100V AC / one minute
3. Contact resistance	100 mΩ max.	100 mA
4. Vibration	No electrical discontinuity of 1 μs or more	Frequency: 10 to 55 Hz, single amplitude of 0.75mm, 2 hours, 3 axis
5. Humidity	Contact resistance: 100 mΩ max. Insulation resistance: 25 MΩ min.	96 hours at temperature of 40℃±2℃ and RH of 90% to 95%
6. Temperature cycle	Contact resistance: 100 mΩ max. Insulation resistance: 50 MΩ min.	Temperature: -55℃→+5℃ to +35℃→+85℃→+5℃ to +35℃ Duration: 30→10→30→10(Minutes) 5 cycles
7. Durability (insertions/withdrawals)	Contact resistance: 100 mΩ max.	50 cycles(Connector for conductivity tests: 500 cycles)
8. Resistance to soldering heat	No deformation of components affecting performance.	Reflow: At the recommended temperature profile Manual soldering: 300℃ for 3 seconds

Note 1: Includes temperature rise caused by current flow.

Note 2: The term "storage" refers to products stored for long period of time prior to mounting and use. Operating temperature range and humidity range covers non-conducting condition of installed connectors in storage, shipment or during transportation.

■Materials and Finishes

Connectors	Component	Material	Finish	Remarks
Receptacles and Headers	Insulator	LCP	Color : Black	UL94V-0
	Contacts	Phosphor bronze	Gold plated	————
	Metal fittings	Phosphor bronze	Tin-copper plated	————

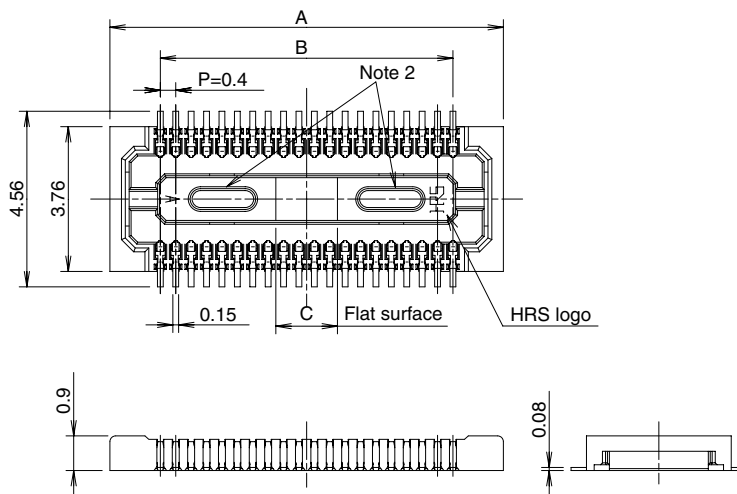
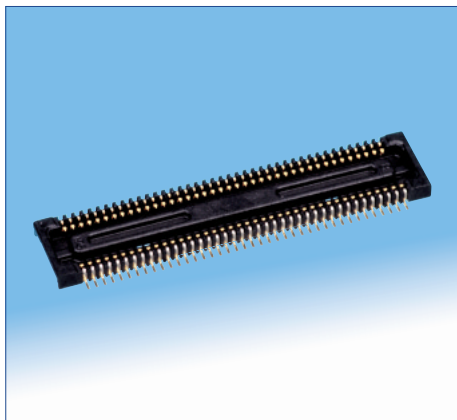
■Ordering information

●Receptacles and Headers

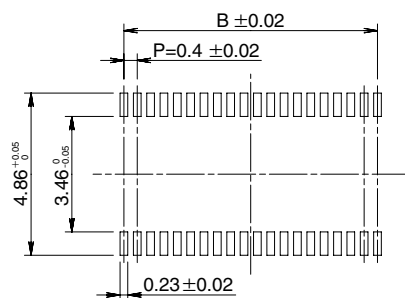
DF30 FC - * DS - 0.4 V ()**
 ① ② ③ ④ ⑤ ⑥ ⑦

① Series name: DF30	⑤ Contact pitch: 0.4 mm
② Configuration FB: With metal fittings, without bosses FC: Without metal fittings, without bosses CJ: Connector for conductivity tests	⑥ Termination section V: Straight SMT
③ Number of positions: 20, 22, 24, 30, 34, 40, 50, 60, 70, 80	⑦ Packaging (81): Embossed tape packaging (5,000 pieces per reel) (82): Embossed tape packaging (1,000 pieces per reel)
④ Connector type DS: Double row receptacle DP: Double row header	

■Receptacles (without metal fittings)



◆Recommended PCB mounting pattern



Recommended solder paste thickness: 120 μ m

[Specification number] -**, (**)

(81): Embossed tape packaging (5,000 pieces per reel)

* Tolerances non- accumulative.

Unit: mm

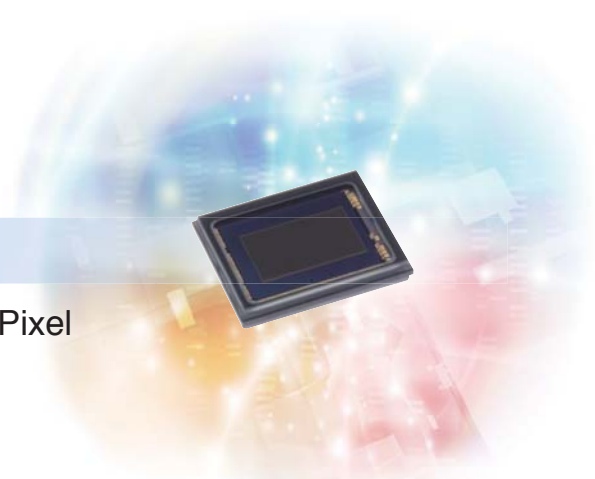
Part Number	CL No.	Number of contacts	A	B	C
DF30FC-20DS-0.4V(**)	CL684-1109-8-**-	20	6.22	3.6	1.2
DF30FC-22DS-0.4V(**)	CL684-1110-7-**-	22	6.62	4.0	1.2
DF30FC-24DS-0.4V(**)	CL684-1111-0-**-	24	7.02	4.4	1.2
DF30FC-30DS-0.4V(**)	CL684-1112-2-**-	30	8.22	5.6	1.2
DF30FC-34DS-0.4V(**)	CL684-1113-5-**-	34	9.02	6.4	1.36
DF30FC-40DS-0.4V(**)	CL684-1078-6-**-	40	10.22	7.6	1.6
DF30FC-50DS-0.4V(**)	CL684-1114-8-**-	50	12.22	9.6	2.0
DF30FC-60DS-0.4V(**)	CL684-1082-3-**-	60	14.22	11.6	2.4
DF30FC-70DS-0.4V(**)	CL684-1115-0-**-	70	16.22	13.6	2.8
DF30FC-80DS-0.4V(**)	CL684-1116-3-**-	80	18.22	15.6	3.2

Note 1: Order by number of reels.

Note 2: Receptacles with 24 or fewer contacts positions will not have recessed areas.

IMX274LQC

Diagonal 7.20 mm (Type 1/2.5) Approx. 8.51M-Effective Pixel
Color CMOS Image Sensor



16:9 Aspect Ratio CMOS Image Sensor Capable of 4K (3840 × 2160) Output for Industrial Applications

Sony has commercialized the "IMX274LQC" Type 1/2.5 (16:9) back-illuminated CMOS image sensor with approximately 8.51M effective pixels for the expanding 4K market.

The IMX274LQC is capable of 4K (3840 × 2160) output at 60 frames/s in ADC 10-bit mode. In addition, the DOL (Digital Overlap)-type HDR (High Dynamic Range) function is

supported at 30 frames/s, realizing 4K video imaging with a wide dynamic range. The IMX274LQC has lower power consumption and is smaller than the existing 4K support CMOS image sensor (IMX172LQT), and the interface supports Sub-LVDS and MIPI CSI-2, enabling use in security camera and industrial applications.

- High-speed video imaging function
- Versatile interface
- DOL-HDR function
- Compact device size

Exmor R

*Exmor R is a trademark of Sony Corporation. The Exmor R is a Sony's CMOS image sensor with significantly enhanced imaging characteristics including sensitivity and low noise by changing fundamental structure of Exmor™ pixel adopted column parallel A/D converter to back-illuminated type.

STARVIS

*STARVIS is a trademark of Sony Corporation. The STARVIS is back-illuminated pixel technology for CMOS image sensors for surveillance camera applications. It features a sensitivity of 2000 mV or more per 1 μm^2 (color product, when imaging with a 706 cd/m² light source, F5.6 in 1 s accumulation equivalent), and realizes high picture quality in the visible-light and near infrared light regions.

High-speed video imaging function

The IMX274LQC realizes 4K (3840 × 2160) all-pixel scan at 30 frames/s in ADC 12-bit mode, and at the high frame rate output of 60 frames/s in ADC 10-bit mode, making it the ideal CMOS image sensor for expanding 4K market applications. The IMX274LQC also realizes Full HD (1920 × 1080) output at 60 frames/s in ADC 12-bit mode (mode 1) and 120 frames/s

in ADC 10-bit mode (mode 2), enabling high-speed video imaging. In addition, various other readout methods are also supported, and diverse drive modes can be selected (Table-3).

Use of a lower frame rate makes it possible to reduce power consumption.

Versatile interface

The IMX274LQC is equipped with two types of output interface (Sub-LVDS, MIPI CSI-2) to meet diverse needs. Both interfaces are capable of 4K 60 frames/s (ADC 10-bit) output, so the

interface can be selected in accordance with the DSP and system used (Table-1).

DOL-HDR function

The IMX274LQC is Sony's first CMOS image sensor to support a DOL-type HDR function for a 4K angle of view. This makes it possible to shoot 4K video with an expanded dynamic

range. The modes that support the DOL function are 4K (3840 × 2160) ADC 10-bit 30 frames/s and Full HD (1920 × 1080) ADC 10-bit 60 frames/s (Table-3).

Compact device size

The IMX274LQC realizes a compact package size of 10.70 mm (H) × 8.50 mm (V) × 1.62 mm (t). This reduced camera

size expands the range of potential security camera and industrial applications.

<Table 1> Device Structure

Item		IMX274LQC
Output image size		Diagonal 7.20 mm (Type 1 / 2.5) aspect ratio 16:9
Number of effective pixels		3864 (H) × 2202 (V) approx. 8.51M pixels
Unit cell size		1.62 μm (H) × 1.62 μm (V)
Optical blacks	Horizontal	Front: 0 pixels, rear: 0 pixels
	Vertical	Front: 16 pixels, rear: 0 pixels
Input drive frequency		12 MHz / 24 MHz / 36 MHz / 72 MHz (Sub-LVDS) 6 MHz / 12 MHz / 18 MHz / 24 MHz (MIPI CSI-2)
Interface		Sub-LVDS (576 Mbps / ch, Max.10 ch) *1 MIPI CSI-2 (1.440 Gbps / Lane) *1
Package		92-pin LGA
Supply voltage V _{DD} (Typ.)		2.8 V / 1.8 V / 1.2 V

*1 Sensor slave mode when using Sub-LVDS and sensor master mode when using MIPI.

<Table 2> Image Sensor Characteristics

Item		Value	Remarks
Sensitivity (F5.6)	Typ.	237 mV	1/30s accumulation
Saturation signal	Min.	630 mV	Tj = 60 °C

<Table 3> Basic Drive Mode

Drive mode	Recommended number of recording pixels	Frame rate [frame/s]	ADC[bit]
All-pixel scan (12 bit)	3840 (H) × 2160 (V)	29.97	12
All-pixel scan (10 bit)	3840 (H) × 2160 (V)	59.94	10
Mode 1*2 (12 bit)	1920 (H) × 1080 (V)	59.94	12
Mode 2*2 (10 bit)	1920 (H) × 1080 (V)	119.88	10
Mode 3*2 (10 bit)	1920 (H) × 1080 (V)	29.97	10
Mode 4*2	1280 (H) × 720 (V)	119.88	10
Mode 5*2	1280 (H) × 540 (V)	239.76	10

Drive mode	Recommended number of recording pixels	Frame rate [frame/s]	ADC[bit]
All-pixel scan (10 bit) DOL *1	3840 (H) × 2160 (V)	29.97	10
Mode 6 (10 bit) DOL *1*2	1920 (H) × 1080 (V)	59.94	10

*1 There are restrictions on the storage time setting values when using DOL.

*2 With vertical addition

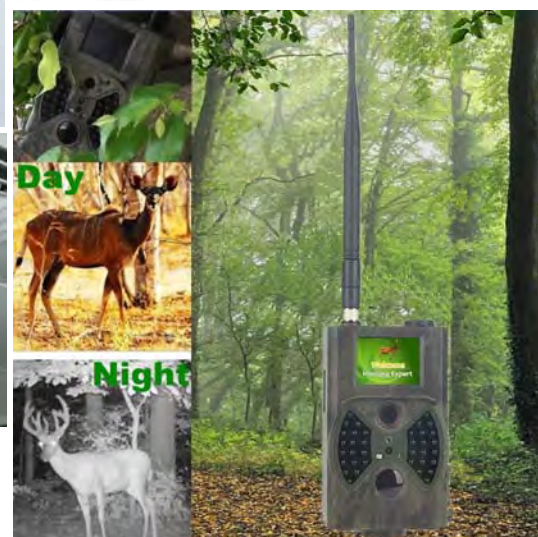
*Sony reserves the right to change products and specifications without prior notice.



Cameras Applications



IMAGING DEVICES





Camera Reliability Test

Reliability Inspection Item			Testing Method	Acceptance Criteria
Category		Item		
Environmental	Storage Temperature	High 60°C 96 Hours	Temperature Chamber	No Abnormal Situation
		Low -20°C 96 Hours	Temperature Chamber	No Abnormal Situation
	Operation Temperature	High 60°C 24 Hours	Temperature Chamber	No Abnormal Situation
		Low -20°C 24 Hours	Temperature Chamber	No Abnormal Situation
	Humidity	60°C 80% 24 Hours	Temperature Chamber	No Abnormal Situation
	Thermal Shock	High 60°C 0.5 Hours Low -20°C 0.5 Hours Cycling in 24 Hours	Temperature Chamber	No Abnormal Situation
Physical	Drop Test (Free Falling)	Without Package 60cm	10 Times on Wood Floor	Electrically Functional
		With Package 60cm	10 Times on Wood Floor	Electrically Functional
	Vibration Test	50Hz X-Axis 2mm 30min	Vibration Table	Electrically Functional
		50Hz Y-Axis 2mm 30min	Vibration Table	Electrically Functional
		50Hz Z-Axis 2mm 30min	Vibration Table	Electrically Functional
	Cable Tensile Strength Test	Loading Weight 4 kg 60 Seconds Cycling in 24 Hours	Tensile Testing Machine	Electrically Functional
Electrical	ESD Test	Contact Discharge 2 KV	ESD Testing Machine	Electrically Functional
		Air Discharge 4 KV	ESD Testing Machine	Electrically Functional
	Aging Test	On/Off 30 Seconds Cycling in 24 Hours	Power Switch	Electrically Functional
	USB Connector	On/Off 250 Times	Plug and Unplug	Electrically Functional





Camera Inspection Standard

Inspection Item		Inspection Method	Standard of Inspection
Category	Item		
Appearance	FPC/ PCB	Color	Major Difference is Not Allowed.
		Be Torn/Chopped	Copper Crack Exposure is Not Allowed.
		Marking	Clear, Recognizable (Within 30cm Distance)
	Holder	Scratches	The Inside Crack Exposure is Not Allowed
		Gap	Meet the Height Standard
		Screw	Make Sure Screws Are Presented (If Any)
		Damage	The Inside Crack Exposure is Not Allowed
	Lens	Scratch	No Effect On Resolution Standard
		Contamination	No Effect On Resolution Standard
		Oil Film	No Effect On Resolution Standard
		Cover Tape	No Issue On Appearance.
Function	Image	No Communication	Test Board Not Allowed
		Bright Pixel	Black Board Not Allowed In the Image Center
		Dark Pixel	White board Not Allowed In the Image Center
		Blurry	The Naked Eye Not Allowed
		No Image	The Naked Eye Not Allowed
		Vertical Line	The Naked Eye Not Allowed
		Horizontal Line	The Naked Eye Not Allowed
		Light Leakage	The Naked Eye Not Allowed
		Blinking Image	The Naked Eye Not Allowed
		Bruise	Inspection Jig Not Allowed
		Resolution	Chart Follows Outgoing Inspection Chart Standard
		Color	The Naked Eye No Issue
		Noise	The Naked Eye Not Allowed
		Corner Dark	The Naked Eye Less Than 100px By 100px
		Color Resolution	The Naked Eye No Issue
Dimension		Height	The Naked Eye Follows Approval Data Sheet
		Width	The Naked Eye Follows Approval Data Sheet
		Length	The Naked Eye Follows Approval Data Sheet
		Overall	The Naked Eye Follows Approval Data Sheet

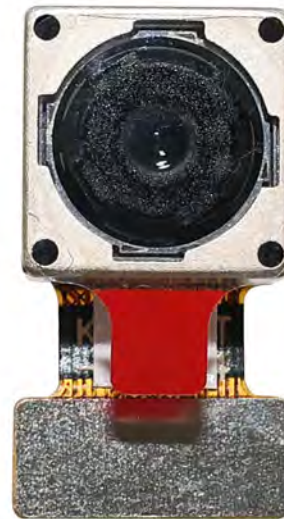


HAMPO Package Solutions

Hampo Camera Module



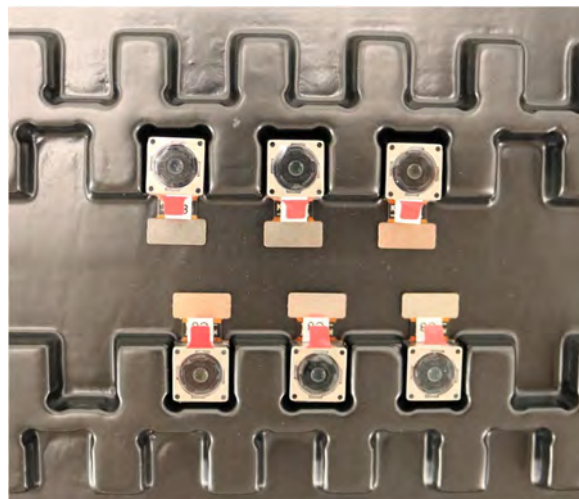
Complete with Lens Protection Film



Tray with Grid and Space



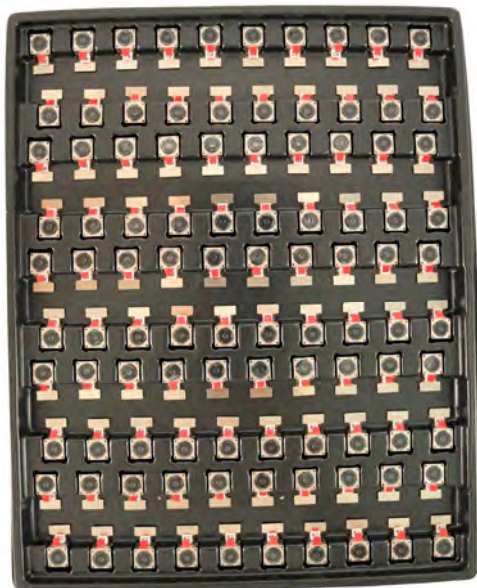
Place Cameras on the Tray



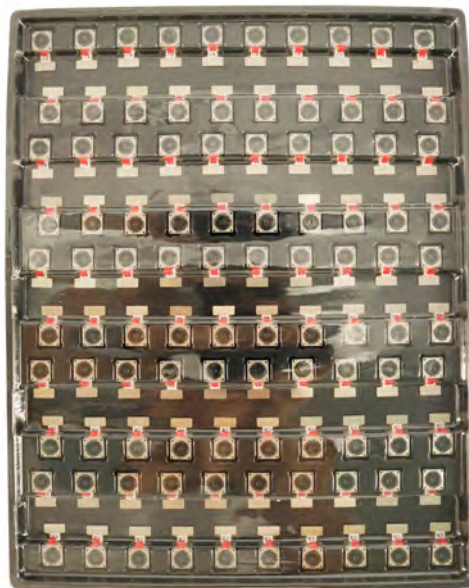


Camera Modules Package Solution

Full Tray of Cameras



Cover Tray with Lid



Place Tray into Anti-Static Bag



Vacuum the Anti-Static Bag





Camera Modules Package Solution

Sealed Vacuum Anti-Static Bag with Labels

1. Model and Description 2. Quantity 3. Manufacturing Date Code 4. Caution





Large Order Package Solution

Place Foam Sheets Between Tray Bags



Foam Sheets are Larger Than Trays



Place Foam Sheets and Trays into Box



Foam Sheets are Tightly Fitting in Box



Seal the Carbon Box



Label the Carbon Shipping Box





An open, empty cardboard box with a white interior lining. The box is shown from a top-down perspective, with the lid flaps open and folded outwards. The interior is lined with a white material, and the box is set against a plain white background.

HAMPO

HAMPO Model No.
HAMPO M6A12 (HMSR-V18)
HSRM, SMP Interface
Auto Focus, 70-8 Degree

DATE IN CHINA

Tray

Tray 1 of 1
300 PIECES
Production Date
20 August 2022
Date Code
2234 (Week 34, 2022)

3M

SCOTCH-BOND Multipurpose Plus
 100% Solvent-Free Adhesive
 100% Solvent-Free Adhesive
 100% Solvent-Free Adhesive
 100% Solvent-Free Adhesive
 100% Solvent-Free Adhesive

3M

SCOTCH-BOND Multipurpose Plus
 100% Solvent-Free Adhesive
 100% Solvent-Free Adhesive
 100% Solvent-Free Adhesive
 100% Solvent-Free Adhesive
 100% Solvent-Free Adhesive



Sample Order and Connector Package Solution

Place Camera Sample into Anti-Static Bag



Place Connectors into Anti-Static Bag



Label the Sample Bags



Place Connectors into Reel



Place Samples into the Carbon Box



Place Connectors into the Carbon Box



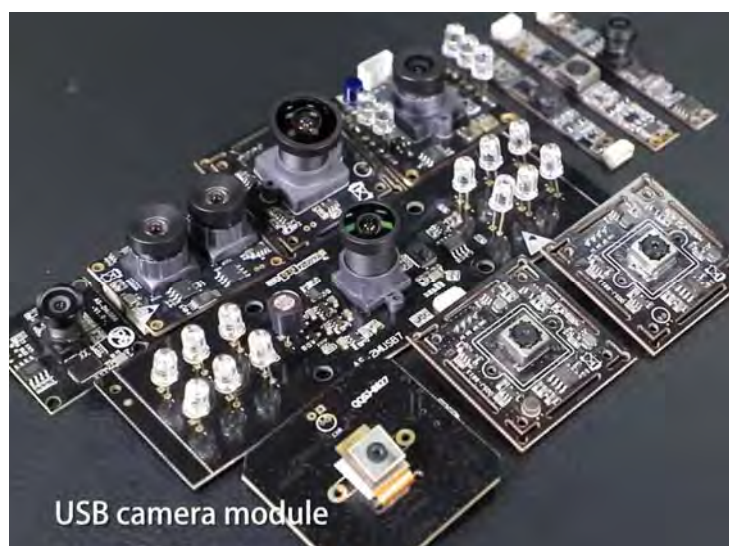


Company HAMPO

Dongguan Hampo Electronic Technology Co., Ltd. was established in 2015, a next-generation technology driven manufacturer specialized in research, design, and produce of audio and video products. Hampo is occupying 150,000 square feet automated plants with 500 employees of annual throughput 180,000,000 units cameras.

Hampo provides OEM, ODM design, contract manufacturing, and builds the camera products. You may provide the requirements to us, even with a hand draft, our sales and engineering work together to meet your needs. We consider ourselves your last-term partner in developing practical and innovative solutions.

Our team covers everything from initial concept development to mass produced product. Hampo specializes in customized camera design, raw material, electronic engineering, firmware/software development, product testing, and packing design. Our experienced strategic supply systems offer a robust and dependable manufacturing capacity for orders of various sizes.



Limited Warranty

Hampo provides the following limited warranty if you purchased the Product(s) directly from Hampo company or from Hampo's website, www.hampotech.com. Product(s) purchased from other sellers or sources are not covered by this Limited Warranty. Hampo guarantees that the Product(s) will be free from defects in materials and workmanship under normal use for a period of one (1) year from the date you receive the product ("Warranty Period").

For all Product(s) that contain or develop material defects in materials or workmanship during the Warranty Period, Hampo will, at its sole option, either: (i) repair the Product(s); (ii) replace the Product(s) with a new or refurbished Product(s) (replacement Product(s) being of identical model or functional equivalent); or (iii) provide you a refund of the price you paid for the Product(s).

This Limited Warranty of Hampo is solely limited to repair and/or replacement on the terms set forth above. Hampo is not reliable or responsible for any subsequent events.





Hampo Strength

Powerful Factory



Professional Service



Promised Delivery

